

Preparation unit—Accessories

AIR TAC

GV Series soft-start valve

Specification

Model	GV200-06	GV200-08	GV300-08	GV300-10	GV300-15	GV400-10	GV400-15
Fluid	Air						
Port size	1/8"	1/4"	1/4"	3/8"	1/2"	3/8"	1/2"
Pressure range	0.25~0.9MPa(35~130psi)						
Proof pressure	1.5MPa(215psi)						
Temperature range	-20~70°C						
Acting type	Solenoid control						
Exhaust port size	1/4"		3/8"			1/2"	
Power connection	Terminal、Grommet						
Standard voltage	AC220V, 110V, 24V(50/60Hz); DC12V, 24V						
Voltage range	-15%~+10%						
Insulation	Class B						
Power consumption	AC: 3.5VA; DC: 2.5W						
Option pressure gauge	F: Square pressure gauge; C: Circular pressure gauge						
Suitable F.R.L type	GC200-06	GC200-08	GC300-08	GC300-10	GC300-15	GC400-10	GC400-15

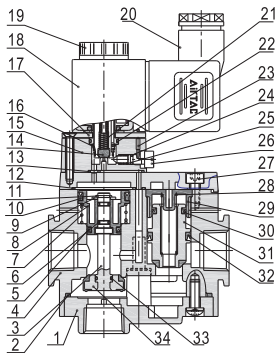
Ordering code

GV300 10 □ F 1 A □ P

Model	Port size	Pressure gauge	Pressure gauge shape	Thread type	Electrical entry	Voltage	Scale
GV200: 200 Series soft start-up valve	Model Port size	Blank: Pressure gauge	F: Square	P: PT	Blank: Terminal	A: AC220V(50/60Hz)	1: MPa
GV300: 300 Series soft start-up valve	200 Series 06: 1/8"	N: No pressure gauge	C: Circular	T: NPT	I: Grommet	B: DC24V	2: psi
GV400: 400 Series soft start-up valve	08: 1/4"			G: G		C: AC110V(50/60Hz)	3: bar
	300 Series 08: 1/4"					E: AC24V(50/60Hz)	
	10: 3/8"					F: DC12V	
	15: 1/2"						
	400 Series 10: 3/8"						
	15: 1/2"						

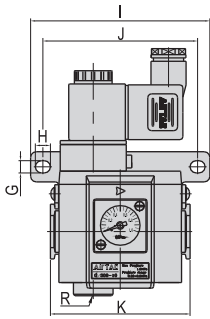
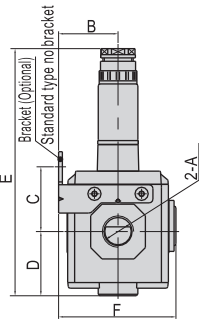
Note: When it is used with F.R.L. combination, extra mounting bracket is need. Please refer to P151 for order detail.

Inner structure



No.	Item	No.	Item	No.	Item
1	Bottom cover	13	Gasket	25	Spring
2	Gasket	14	Gasket	26	Manual override
3	Spool	15	Pilot kit	27	Fixed screw
4	Body	16	spring	28	Spring
5	O-ring	17	Fixed lplate	29	Valve spool
6	O-ring	18	Coil set	30	O-ring
7	Spring	19	Nut	31	Valve spool
8	Inlet piston	20	Connector	32	O-ring
9	Piston gasket	21	Spring	33	O-ring
10	O-ring	22	O-ring	34	Inlet plug
11	Snap ring	23	Manual override block		
12	Gasket	24	O-ring		

Dimensions

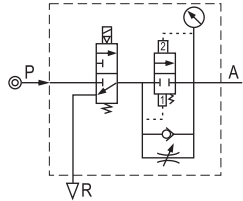


Item\Model	GV200	GV300	GV400
	06 08	08 10 15	10 15
A	1/8" 1/4"	1/4" 3/8" 1/2"	3/8" 1/2"
B	24.5	31.5	40.5
C	30.5	34.5	39
D	30	34	40.5
E	123.5	131	142.5
F	57	62.2	80
G	5.5	6.5	8.5
H	8	8	11
I	80	95	120
J	67	82	102
K	59	74	90
R	1/4"	3/8"	1/2"



GV

Symbol

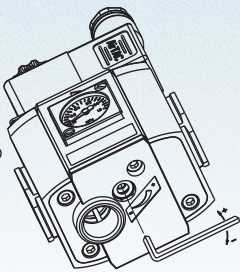


Product feature

Soft start-up valve is used to input compressed air into pneumatic system slowly and has the effect of safety and protection. Air intake is connected with the input P of Soft start-up valve. If coil is energized, the 3/2 way valve opens. At this time, a little air comes to output A through throttle valve, which increases the pressure of the system gradually; when the output pressure is equal the half of the input pressure, Soft start-upvalve completely opens and the flow at this time reaches the highest value of itself. When the coil is de-energized, air intake P closes, the air returns to R orifice through reflux valve and is quickly exhausted. The pressure of the system falls to zero, which protects the whole system.

Attention

Manually adjust the "+" and "-"throttle screw at the bottom of the soft start-up valve as per the requirement of start speed. It shall go slowly, other wise sudden acting of the product or system shall be caused with a heavy impact.



Preparation unit—Accessories

AIRTAC

GZ Series safe on-off valve

■ Specification

Model	GZ200-06	GZ200-08	GZ300-08	GZ300-10	GZ300-15	GZ400-10	GZ400-15
Fluid	Air						
Port size	1/8"	1/4"	1/4"	3/8"	1/2"	3/8"	1/2"
Exhaust port size	1/4"			3/8"		1/2"	
Acting type	Manu						
Valve type	3 port 2 way						
Pressure range	0~0.9MPa(0~130psi)						
Proof pressure	1.5MPa(215psi)						
Temperature range	-20~70°C						
Operation angle	90°						
Suitable F.R.L type	GC200-06	GC200-08	GC300-08	GC300-10	GC300-15	GC400-10	GC400-15

■ Ordering code

GZ300 10 P

Model

GZ200: 200 Series soft on-off valve
GZ300: 300 Series soft on-off valve
GZ400: 400 Series soft on-off valve

Thread type

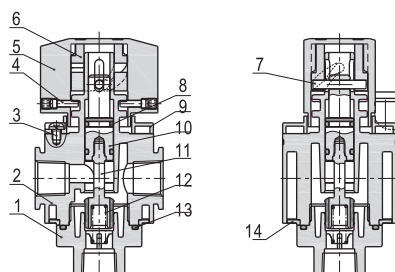
P: PT
T: NPT
G: G

Port size

Model	Port size
200 Series	06: 1/8"
	08: 1/4"
300 Series	08: 1/4"
	10: 3/8"
400 Series	15: 1/2"
	10: 3/8"
	15: 1/2"

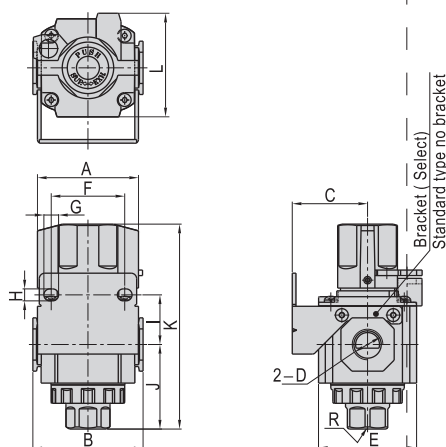
Note : When it is used with F.R.L. combination, extra mounting bracket needed. Please refer to P151 for order detail.

■ Inner structure



No.	Item	No.	Item
1	Valve cap	8	O-ring
2	Body	9	Cover
3	Screw	10	Spool
4	Operating screw	11	Plug
5	Adjusting screw	12	Spring
6	Special screw	13	O-ring
7	Fixing plate	14	Cover

■ Dimensions



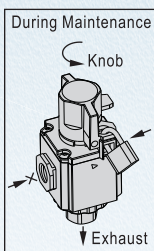
Item/Model	GZ200		GZ300		GZ400	
	06	08	08	10	15	10 15
A	42	55	65			
B	47	60	75			
C	30	41	50			
D	1/8"	1/4"	1/4"	3/8"	1/2"	3/8" 1/2"
E	40	53.5	64			
F	27	40	55			
G	8.5	8	11			
H	5.5	6.5	8.5			
I	23	27	33.5			
J	36.5	46	58.5			
K	89	112.5	134			
L	42.5	56.5	66			
R	1/4"	3/8"	1/2"			

■ Symbol



■ Product feature

1. It is module design and can be used with G series F.R.L. combination by bracket.
2. This valve can be used as manual 3/2 way valve.
3. Visual indication marked EXH/SUP.
4. This valve meets the standard on installation conducted by operator specified by OSHA (Occupational Safety & Health Administration). When the machinery is maintained and serviced, the purge valve (Safe on-off valve) for remaining pressure shall be used to eliminate the remaining pressure when the air source is cut off. Valve must be locked to prevent accidental operation by a third party during maintenance. This prevents accidental system pressurization & cylinder actuation which can result in injuries to the machine operator.



Preparation unit—Accessories

GA series of gas-distribution block

■ Specification

Model	GA200-06	GA200-08	GA300-08	GA300-10	GA400-10	GA400-15	GA600-20	GA600-25
Fluid	Air							
Port size	1/8"	1/4"	1/4"	3/8"	3/8"	1/2"	3/4"	1"
Way number	Four							
Pressure range	0~0.9MPa(0~130psi)							
Proof pressure	1.5MPa(215psi)							
Temperature range	-20~70°C							

① PT thread, NPT thread and G thread are available.

■ Ordering code

GA200 08 P

Model
GA200: 200 Series gas-distribution block
GA300: 300 Series gas-distribution block
GA400: 400 Series gas-distribution block
GA600: 600 Series gas-distribution block

• Thread type

P: PT
T: NPT
G: G

• Port size

Model	Port size
200 Series	06: 1/8"
	08: 1/4"
300 Series	08: 1/4"
	10: 3/8"
400 Series	10: 3/8"
	15: 1/2"
600 Series	20: 3/4"
	25: 1"

Note: When it is used with F.R.L. combination, extra mounting bracket is need. Please refer to below for order detail.

■ Dimensions




The diagram illustrates the GA series gas-distribution block. The top view (left) shows a square block with a central circular port and four side ports. Dimensions A, B, C, and D are indicated. A detail view 4-A shows the port thread.

The side view (right) shows the block's profile with dimensions A, B, C, and D. The central port is labeled 4-A.

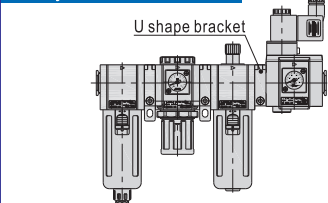
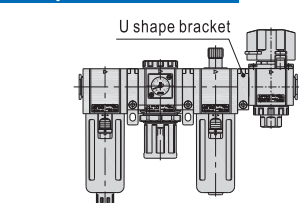
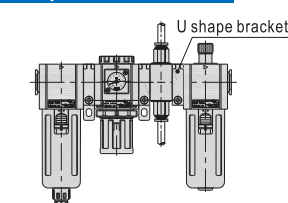
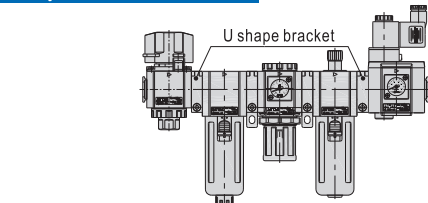
Model\Item	A	B	C	D
GA200	06 1/8"	36	30	28.5
	08 1/4"	36	30	28.5
GA300	08 1/4"	44	38	35
	10 3/8"	44	38	35
GA400	10 3/8"	52	52	42
	15 1/2"	52	52	42
GA600	20 3/4"	76	68	60
	25 1"	76	68	60

Joint accessories—Bracket

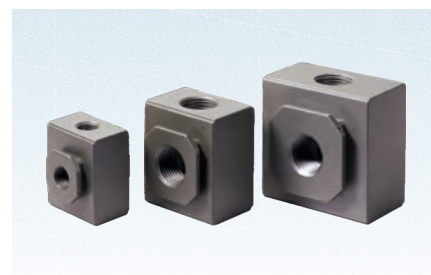
■ How to select the bracket

Bracket name	Code	Photo	Adapt accessories model		
T shape bracket	GA200T-P1		GV200	GZ200	GA200
	GA300T-P1		GV300	GZ300	GA300
	GA400T-P1		GV400	GZ400	GA400
	GA600T-P1		-	-	GA600
L shape bracket	GA200L-P1		GV200	GZ200	GA200
	GA300L-P1		GV300	GZ300	GA300
	GA400L-P1		GV300	GZ400	GA400
	GA600L-P1		-	-	GA600
U shape bracket	GA200U-P1		GV200	GZ200	GA200
	GA300U-P1		GV300	GZ300	GA300
	GA400U-P1		GV400	GZ400	GA400
	GA600U-P1		-	-	GA600

■ How to use the bracket

Use to joint GV and GC series	Use to joint GZ and GC series	Use to joint GA and GC series	Use to joint GZ GV and GC series
			

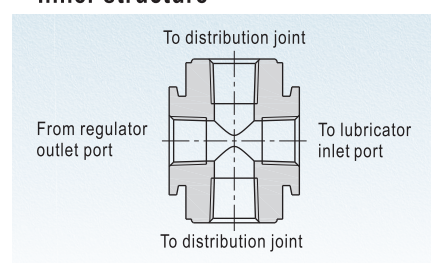
AIRTAC



■ Product feature

1. It is installed between G series regulator (or filter & regulator) and G series Lubricator. The air flow is divided by the device that one enters Lubricator to supply oil for lubrication and the other (the second way) directly enters the equipment.
2. Several kinds of bracket can be selected to connect regulator and lubricator. Optional brackets are type T, type L and type U.

■ Inner structure



GA

Memo

Note

AIRTAC



GA