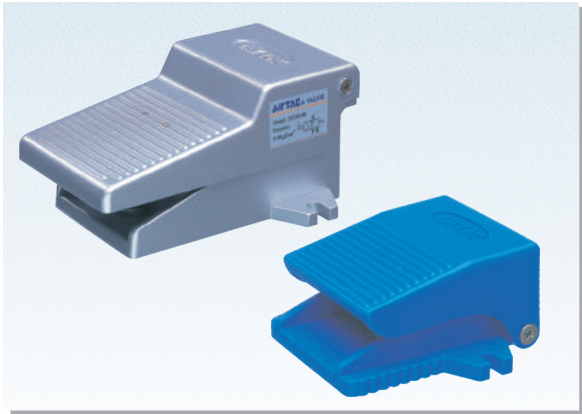


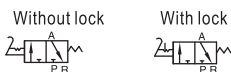
Foot pedal valve ( 3/2way )

3F, 3FM Series

AIRTAC



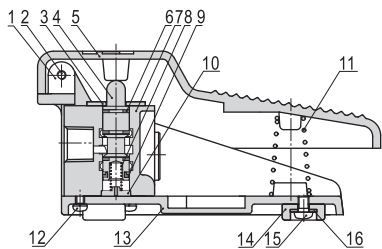
Symbol



Product feature

- 1. Direct acting and normally closed type.
- 2. The 3F series has aluminum foot pedal and 3FM series has plastic foot pedal, in direct acting type, horizontal and compact structure.
- 3. If the duration of direction-change is long, the valves with lock may be selected.
- 4. The clamping framework is steady and reliable that it is easy and quick to unlock. However, with the limitation of the dimension of structure, it can not bear frequent strong impact.

Inner structure



No.	Item	No.	Item	No.	Item
1	Bushing	7	Body	13	Base
2	Fixed screw	8	Spring	14	Base pad
3	Fixed plate	9	E clip	15	Fixed screw
4	Spool	10	Spring bolder	16	Clip
5	Pedal	11	Override speing		
6	O-ring	12	Fixed screw		



Note: Lockable type should be added grease periodically to ensure the machine can work regularly

Specification

Model	3 FM210-M5	3F210-06	3FM210-06	3F210-08	3FM210-08
Fluid	Air (to be filtered by 40 μ m filter element)				
Operating	Acting type controlled by foot normally closed				
Port size①	M5	1/8"	1/4"	1/8"	1/4"
Valve type	3/2 Way				
Pressure range	0~0.8MPa(0~114psi)				
Proof pressure	1.5MPa(215psi)				
Temperature	-20~70℃				
Material body	3FM:Plastic; 3F:Aluminum alloy				
Lubrication	Not required				

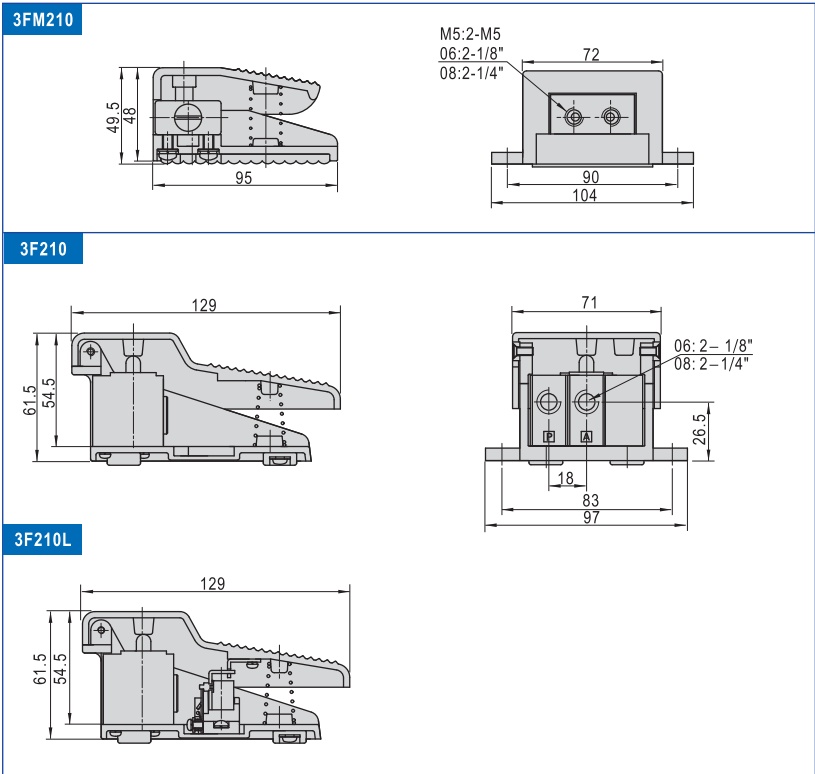
① PT thread, NPT thread and G thread are available.

Ordering code

3F210 08 L P

Model		Thread type	
3FM210: 3/2 way foot pedal valve (mini type)		Port size	Thread type
3F210: 3/2 way foot pedal valve		M5	Not code
		1/8"	P: PT
		1/4"	T: NPT
			G: G
Port size		Note	
Model	Port size	Model	Note
3FM210	M5: M5	3FM210	Not code
	06: 1/8"		
	08: 1/4"	3F210	Blank: Without lock
3F210	06: 1/8"		L: With lock
	08: 1/4"		

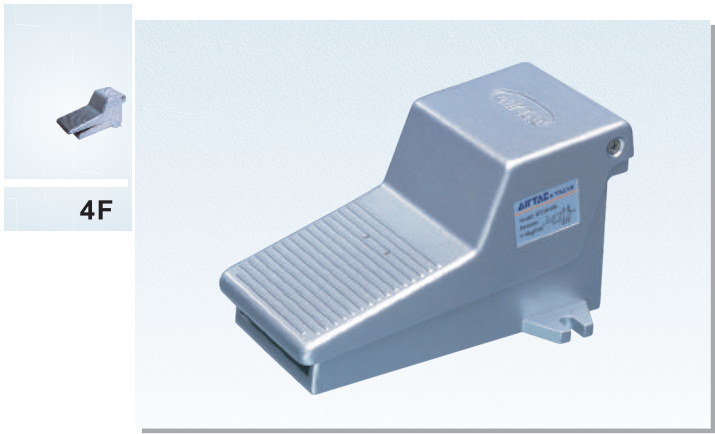
Dimensions



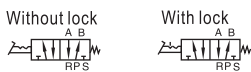
Foot pedal valve ( 5/2way )



4F Series



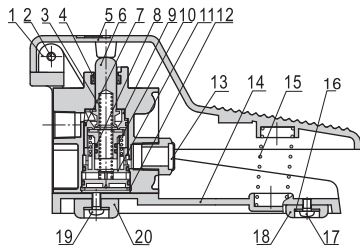
Symbol



Product feature

- 1. The aluminum foot pedal is designed with direct acting, which is steady and reliable.
- 2. If the duration of direction-change is long, the valves with lock may be selected.
- 3. The clamping framework is steady and reliable that it is easy and quick to unlock. However, with the limitation of the dimension of structure, it can not bear frequent strong impact.
- 4. Plastic guard with high strength may be selected.

Inner structure



No.	Item	No.	Item	No.	Item	No.	Item
1	Pin	6	Spool	11	Bottom cover	16	Washer
2	Screw	7	O-ring	12	C clip	17	Screw
3	Spring	8	O-ring	13	Silencer	18	Base pad
4	E clip	9	Front cover	14	Base	19	Screw
5	Pedal	10	Piston	15	Pedal spring	20	Base pad

Note:

Note: Lockable type should be added grease periodically to ensure the machine can work regularly

Specification

Model	4F210-08	4F210-08L	4F210-08G	4F210-08LG
Fluid	Air (to be filtered by 40 μm filter element)			
Operating	Acting type controlled by foot			
Port size①	1/4"			
Valve type	5/2 Way			
Pressure range	0~0.8MPa(0~114psi)			
Proof pressure	1.5MPa(215psi)			
Temperature	-20~70℃			
Material body	Aluminum alloy			
Lubrication	Not required			

① PT thread, NPT thread and G thread are available.

Ordering code

4F210 08 L P

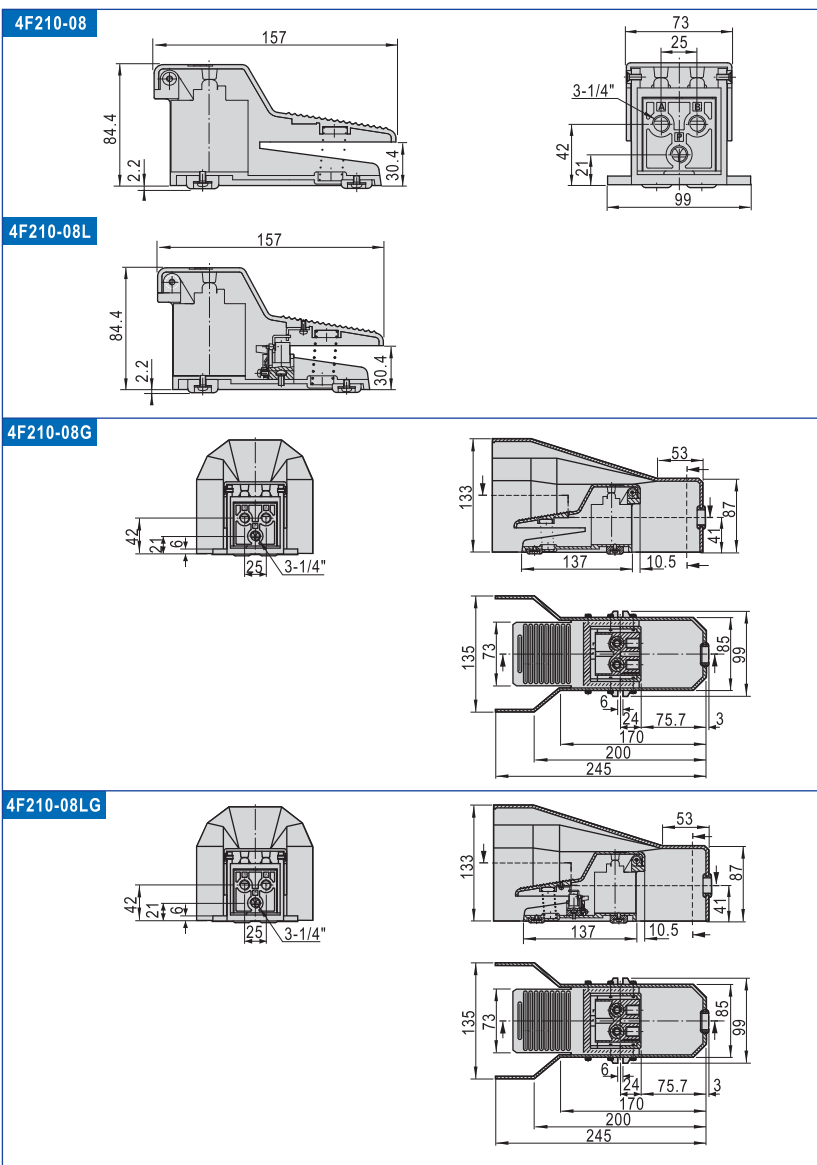
Model  
4F210: 5/2 way foot pedal valve

Port size  
08: 1/4"

Thread type  
P: PT  
T: NPT  
G: G

Note  
Blank: Without lock  
L: With lock  
G: With guard  
LG: With lock and guard

Dimensions



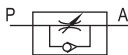
# Flow control valve

## ASC Series

AIRTAC



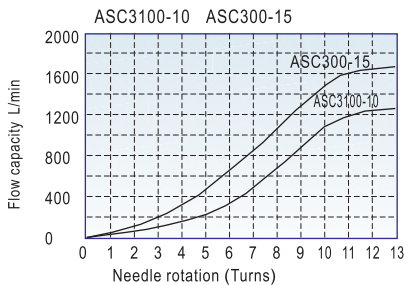
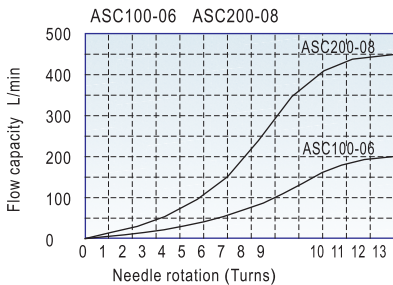
### Symbol



### Product feature

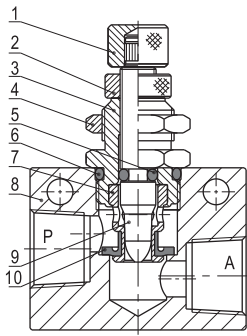
1. Small and compact structure.
2. Allows air to exhaust and cut off air flow. The adjustment screw is both sensitive and precise..
3. Can be mounted in various position to facilitate installation and application.

### Flow chart



### Inner structure

No.	Item
1	Adjustment cap
2	Clamping cap
3	Throttle body
4	Hexagon nut
5	O-ring
6	O-ring
7	Throttle sheath
8	Body
9	Throttle column
10	Spool O-ring



### Specification

Model	ASC100-06	ASC200-08	ASC300-10	ASC300-15
Fluid	Air (to be filtered by 40 $\mu$ m filter element)			
Port size①	1/8"	1/4"	3/8"	1/2"
Pressure range	0.05~0.95MPa(7~135psi)			
Proof pressure	1.5MPa(215psi)			
Temperature	-20~70°C			
Material body	Aluminum alloy			
Flow (L/min)	Control flow	200	450	1250
	Free flow	400	800	1500

① PT thread, NPT thread and G thread are available.

### Ordering code

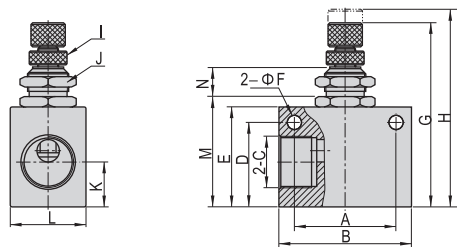
#### ASC 300 10 P

Model	Thread type
ASC: Flow control valve	P: PT
	T: NPT
	G: G

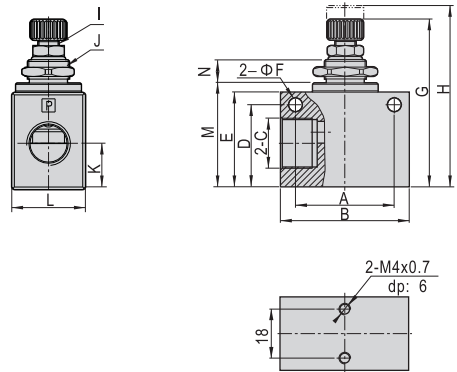
Code	Port size
100: 100 series	Model Port size
200: 200 series	100 series 06: 1/8"
300: 300 series	200 series 08: 1/4"
	300 series 10: 3/8"
	300 series 15: 1/2"

### Dimensions

#### ASC100, 200



#### ASC300



Type\Item	A	B	C	D	E	F	G	H	I	J	K	L	M	N
ASC10006	22	32	1/8"	18	23	4.3	46.8	52.3	M6×0.5	M12×0.75	10	18	26	8.6
ASC20008	26	36	1/4"	23	27	4.3	50.8	56.3	M6×0.5	M12×0.75	13.5	18	30	8.6
ASC30010	35	50	3/8"	32	37	5.3	65	74	M8×0.75	M16×1.0	17.5	28	40.5	10.2
ASC30015	35	50	1/2"	32	37	5.3	65	74	M8×0.75	M16×1.0	17.5	28	40.5	10.2

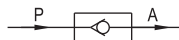
# Non-return valve

## NRV Series

**AIRTAC**



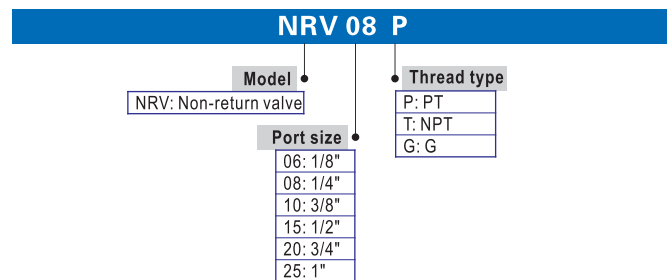
### Symbol



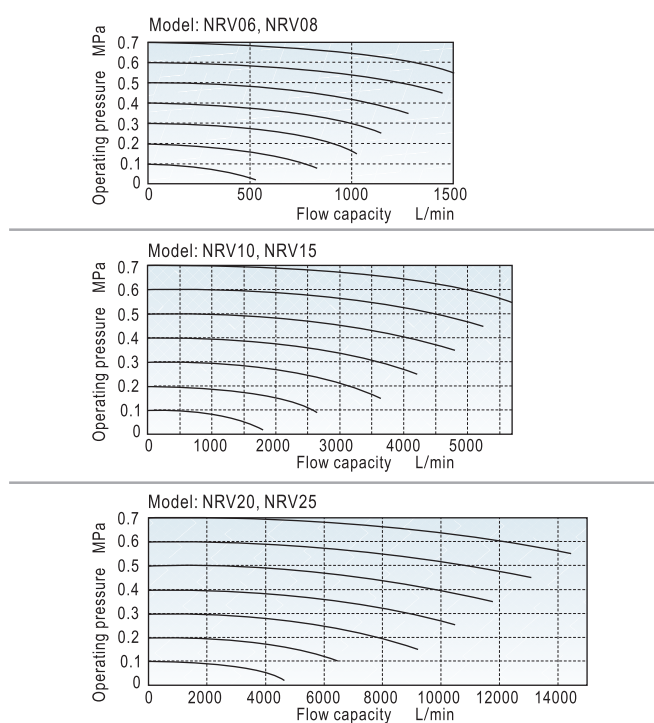
### Product feature

1. There are many port sizes: 1/8", 1/4", 3/8", 1/2", 3/4", 1".
2. It allows the fluid to flow in one direction **ONLY**.
3. It is prevent backflow due to sudden drop in pressure or decrease in air consumption .
4. There is large valid area of section.
5. The spool is made of POM, valve's core sealed with rubber, and it has a compact structure.

### Ordering code



### Flow chart



### Specification

Model	NRV06	NRV08	NRV10	NRV15	NRV20	NRV25
Fluid	Air (to be filtered by 40 $\mu$ m filter element)					
Port size①	1/8"	1/4"	3/8"	1/2"	3/4"	1"
Orifice size mm <sup>2</sup> (Cv valve)	18(1.0)	27(1.5)	60(3.33)	73(4.06)	230(12.78)	260(14.44)
Pressure range	0.02~1.0MPa(2.9~145psi)					
Proof pressure	1.5MPa(215psi)					
Temperature	-20~70°C					
Material body	Aluminum alloy					

Note ①: PT thread, NPT thread and G thread are available.

### Inner structure

**NRV06, 08**

**NRV10, 15, 20, 25**

No.	Item	Material
1	Body	Aluminum alloy
2	Spring	Stainless steel
3	Spool	POM
4	End cover	Aluminum alloy
5	Screw	Carbon steel
6	O-ring	NBR
7	Washer	SPCC
8	Gasket washer	NBR/Aluminum alloy+NBR
9	Bumper	NBR

### Dimension

Model\Item	A	B	C	D
NRV06	50	25	30	1/8"
NRV08	50	25	30	1/4"
NRV10	67	36.5	48	3/8"
NRV15	67	36.5	48	1/2"
NRV20	95	50	66	3/4"
NRV25	95	50	66	1"